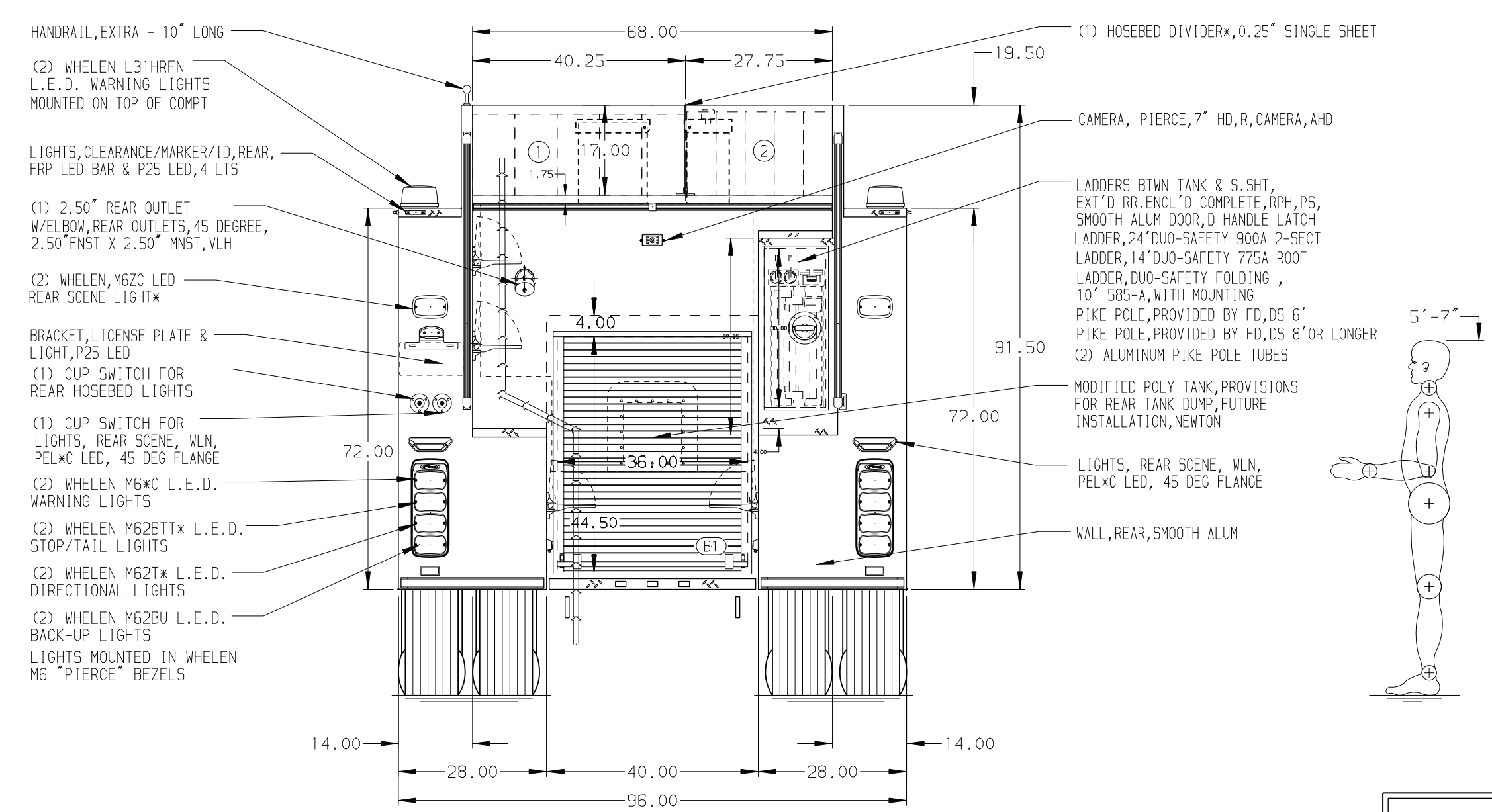
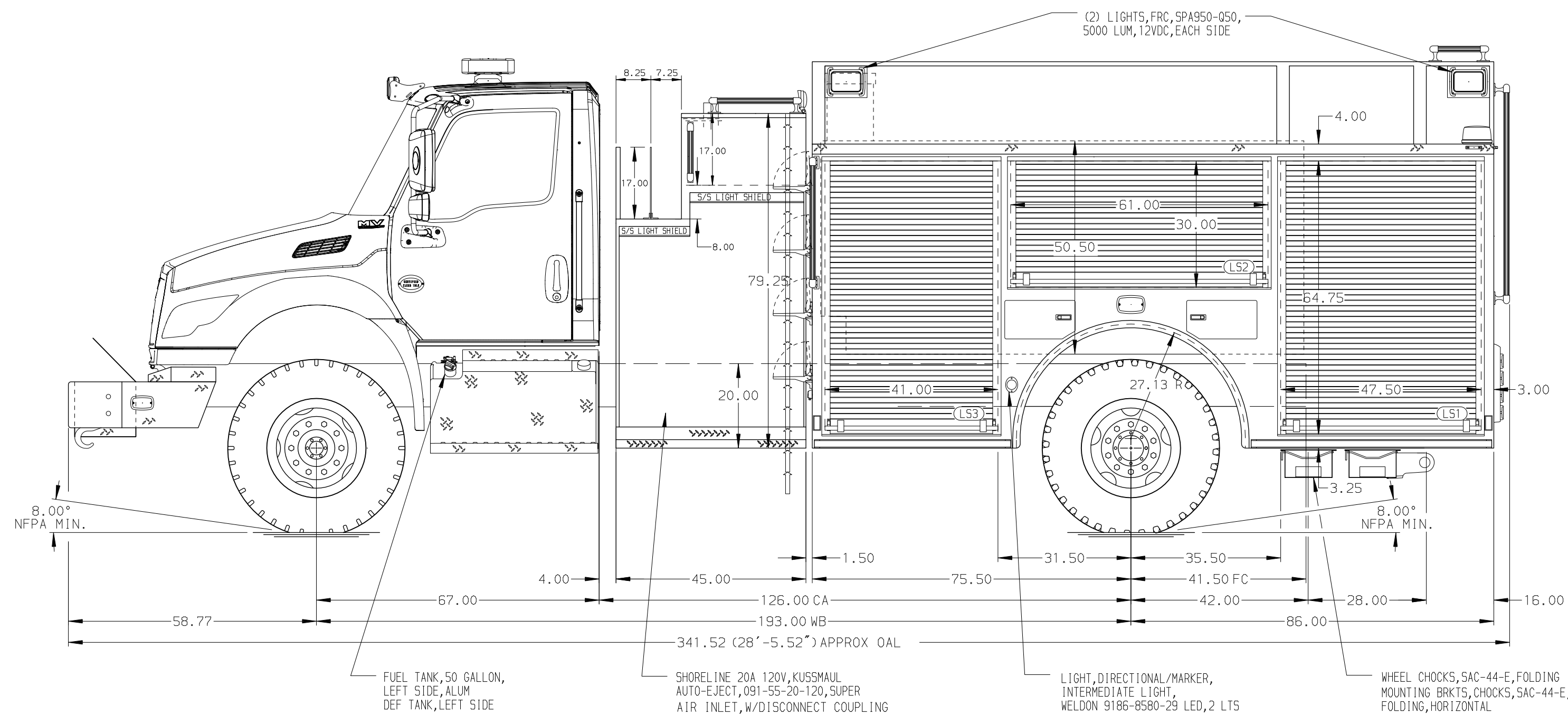


HOSEBED CAPACITIES

- ① 1000' OF 5.00" D.J. POLY HOSE
- ② 1000' OF 3.00" D.J. POLY HOSE



ALUMINUM BODY

NOTE
DIMENSIONS SHOWN ARE APPROXIMATE AND ARE SUBJECT TO MINOR DEVIATIONS AS MAY OCCUR OR BE NECESSARY IN CONSTRUCTION. MINOR DETAILS NOT SHOWN.

		JOB NO.	43925
		SCALE	DATE
TITLE 1500-D-1000P, 980G WATER, 206 FOAM, 161" PUMPER BODY 45" SIDE CONTROL, (2) 1.5" CROSSLAYS, 3" DELUGE		DRAWN BY	20MAY25
FOR PIERCE FIELD UNIT BRADENTON, FL		CHECKED BY	21MAY25
DWG NO. 43925AD		SHEET SIZE	SHEET NO.
		D	1 OF 1

REV	DATE	BY	CH	MV
21JAN26	RHU	JAP		MAKE
29OCT25	VHO	JAP		1HC
02OCT25	ADP	AJA		MODEL