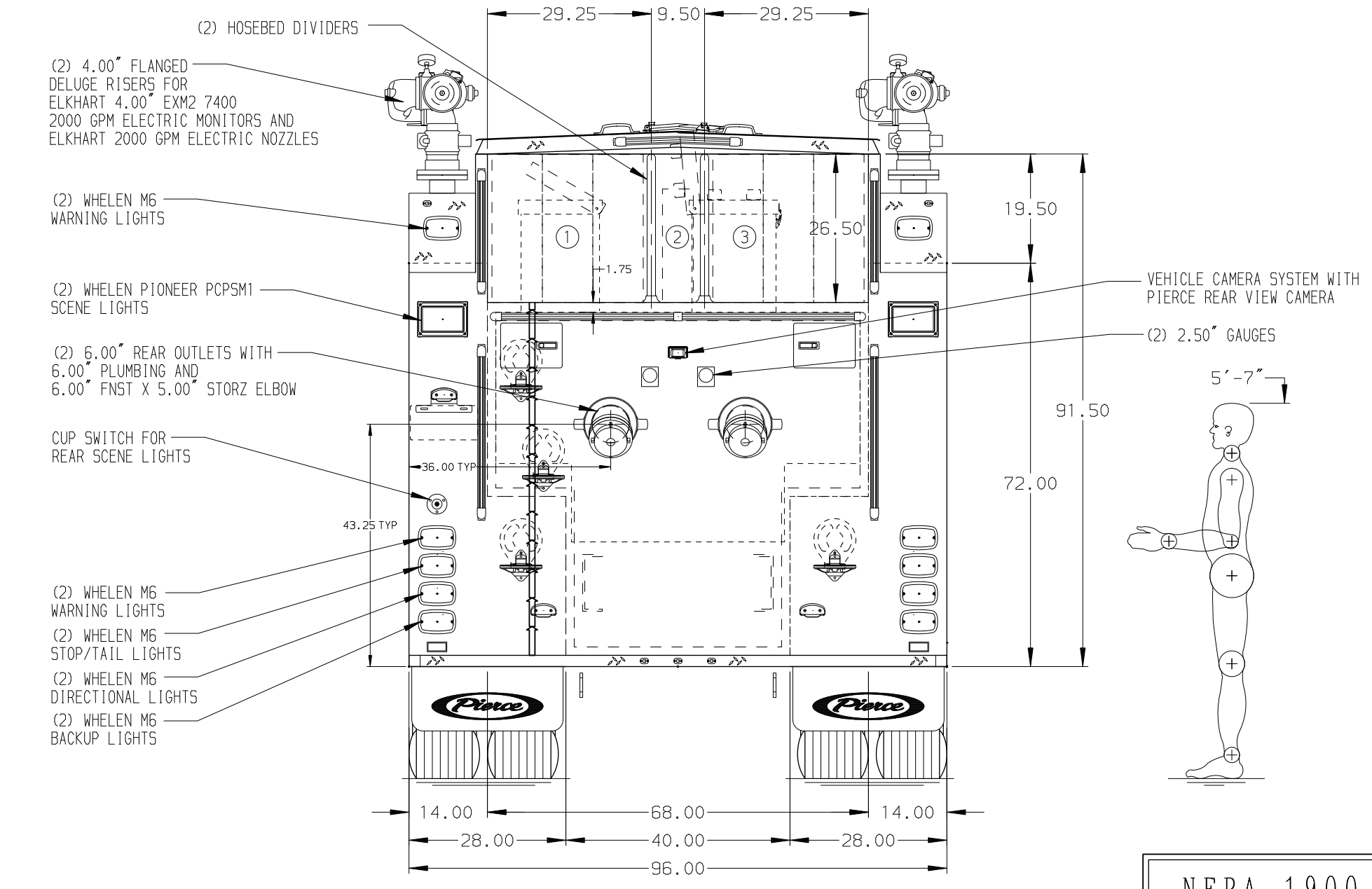
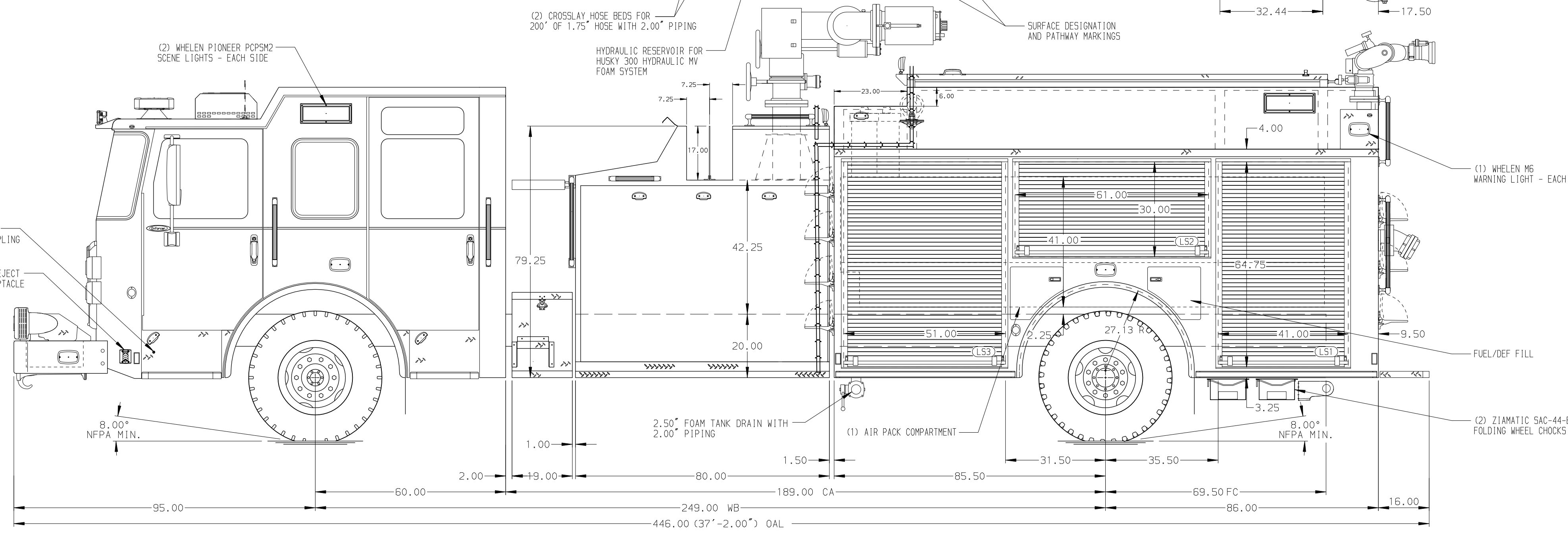


HOSEBED CAPACITIES

①	- 1000' OF 6.00" DJP HOSE
②	- 300' OF 3.00" DJP HOSE
③	- 1000' OF 6.00" DJP HOSE



ALUMINUM BODY

REFERENCE: 40668

NFPA 1900 (2024) COMPLIANT

NOTE
DIMENSIONS SHOWN ARE APPROXIMATE AND ARE SUBJECT TO MINOR DEVIATIONS AS MAY OCCUR OR BE NECESSARY IN CONSTRUCTION. MINOR DETAILS NOT SHOWN.

- BATTERY CHARGER LOCATED BEHIND DRIVER SEAT
- BATTERY CHARGE INDICATOR LOCATED AT DRIVER'S SEAT RISER PER ORDER

REV	DATE	BY	CH	ENFORCER
1	18DEC25	SAM	AST	
2	05NOV25	SAM	AST	
3	22JUL25	SAM	EGO	

		JOB NO.	44743
		SCALE	1:24
TITLE 3000 GPM, 1250G TANK, 250G WATER, 1000G FOAM 171" BODY, INDUSTRIAL, MUX	FOR PIERCE FIELD UNIT APPLETON, WISCONSIN	DATE	
		DRAWN BY	SAM
DWG NO. 44743AD		CHECKED BY	PHA
		SHEET SIZE	SHEET NO.
			1 OF 1