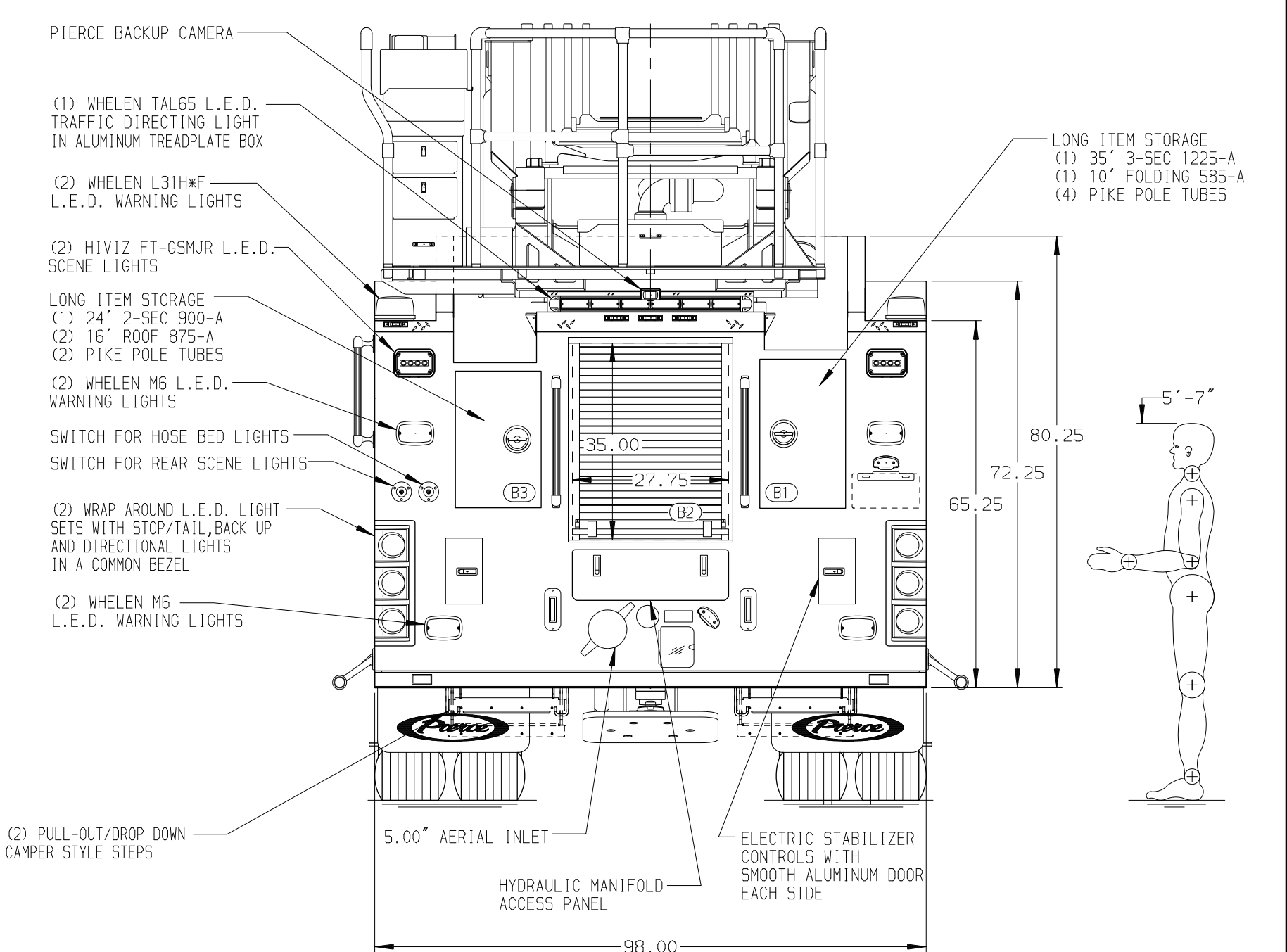
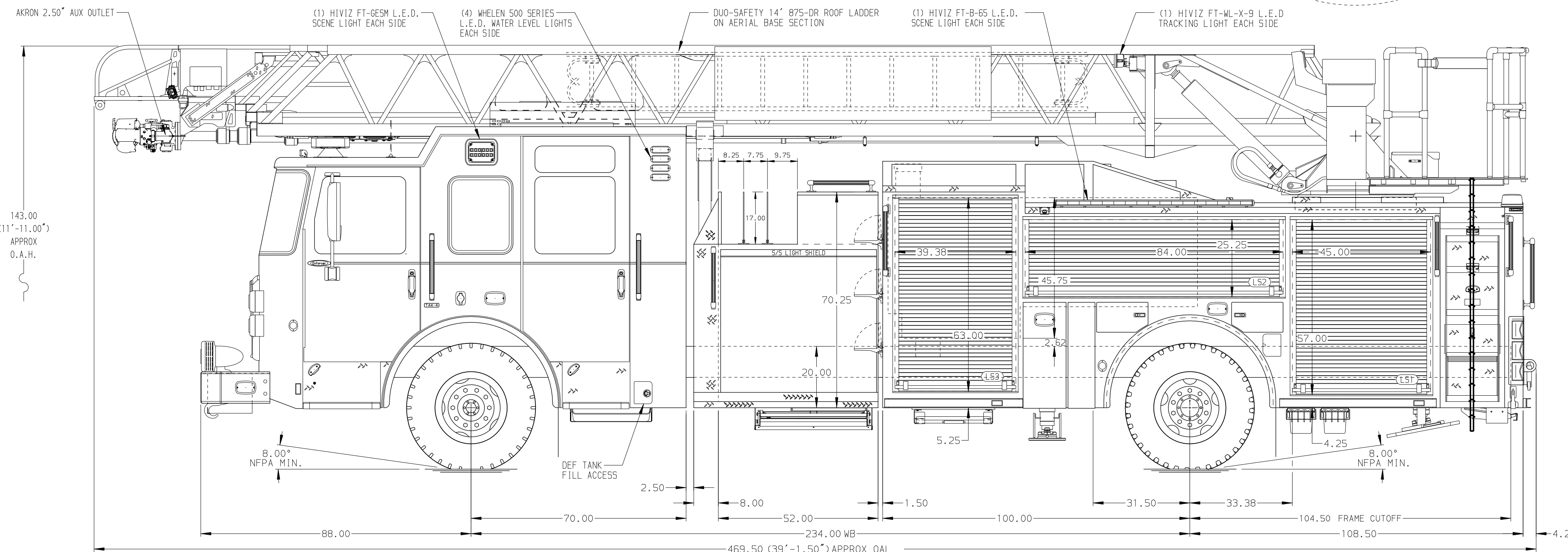


SURFACE DESIGNATION AND PATHWAY MARKINGS

BODY	WATER TANK
107' ASL Aluminum Body	500 Gallon Poly Water Tank
COMPT, LEFT SIDE FRONT	Foam System
Full Height RollUp Forward	Plumbing for Future Husky Foam System
COMPT, LEFT SIDE REAR	Foam Cell
Full Height RollUp Rearward	20 Gallon Foam Cell, Non Reduced Water
COMPT, RIGHT SIDE FRONT	
Full Height RollUp Forward	
COMPT, RIGHT SIDE REAR	
Full Height RollUp Rearward	



CHASSIS	CAB	AXLE, FRONT, CUSTOM	TRANSMISSION	PUMPHOUSE	CROSSLAYS, 1.50"	SPEEDLAYS	SAFETY	CUSTOMER APPROVAL	Pierce MANUFACTURING INC.		JOB NO.			
Enforcer Chassis ENGINE 510 HP Paccor MX13 Engine	7010 Enforcer Notched Cab BUMPER 19" Extended Painted Steel	22,800 Lb TAK-4 Axle AXLE, REAR 33,500 Lb Meritor Axle	Allison 6th Gen, 4000 EVS P	52" Control Zone Side Mount PUMP 2000 GPM Waterous CSU	(2) 1.50" Standard Capacity CROSSLAYS, 2.50"	Speedlays Not Required GENERATOR Generator Not Required	Side Roll and Frontal Impact Protection	APPROVED BY: _____ DATE: _____			45096			
NOTE DIMENSIONS SHOWN ARE APPROXIMATE AND ARE SUBJECT TO MINOR DEVIATIONS AS MAY OCCUR OR BE NECESSARY IN CONSTRUCTION. MINOR DETAILS NOT SHOWN.								TITLE			107' ASCENDANT AERIAL LADDER AND BODY ASSEMBLY	SCALE	1:24	DATE
								CHASSIS DATA	FOR	PIERCE FIELD UNIT APPLETON, WI	DRAWN BY	ANZ	19FEB26	
								MAKE			CHECKED BY	WME	26FEB26	
								MODEL	DWG NO.	45096AD	SHEET SIZE	D	SHEET NO.	1 OF 1
								REV	DATE	BY	CH			