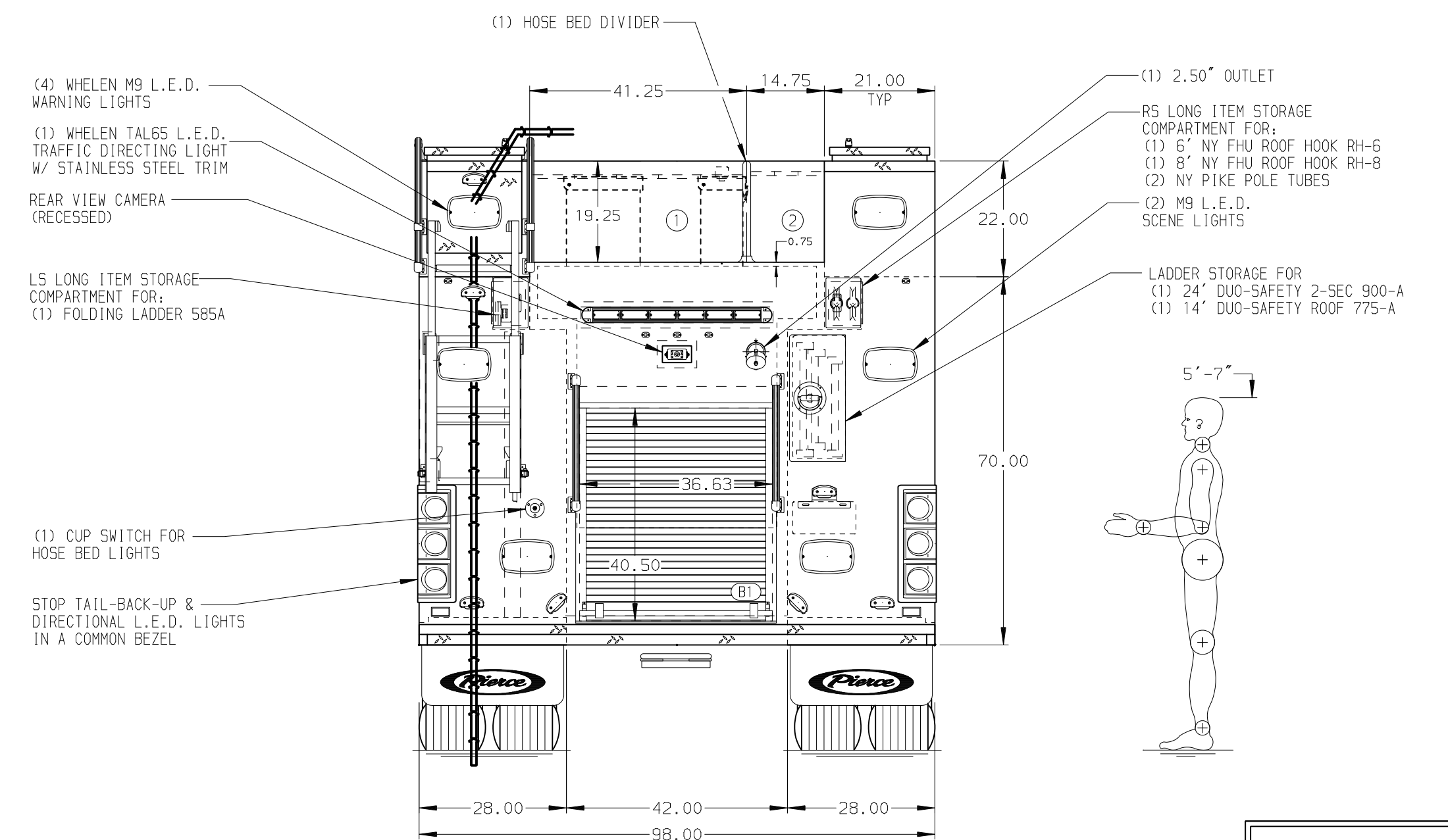
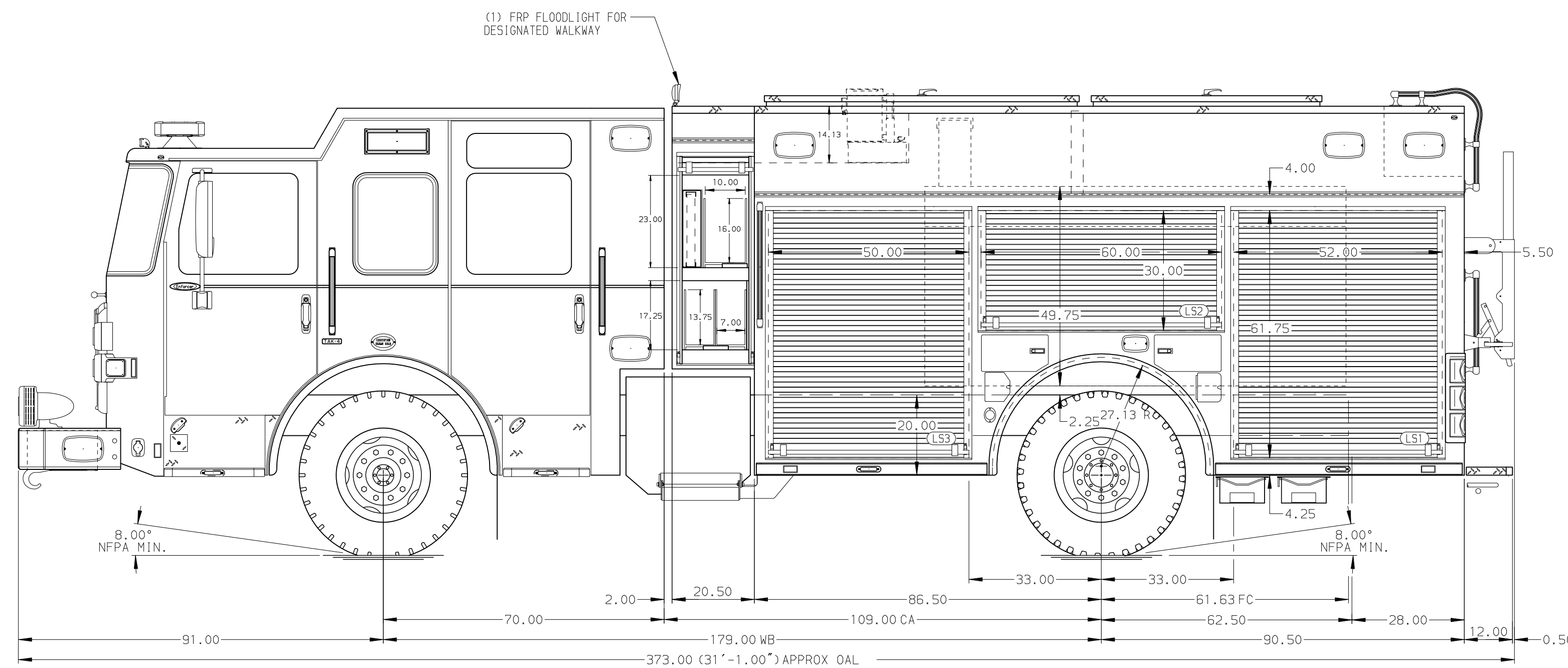


- HOSEBED CAPACITIES
- ① - 1000' OF 5.00" D.J. POLY HOSE
 - ② - 600' OF 2.50" D.J. POLY HOSE



ALUMINUM BODY

NOTE
DIMENSIONS SHOWN ARE APPROXIMATE AND ARE SUBJECT TO MINOR DEVIATIONS AS MAY OCCUR OR BE NECESSARY IN CONSTRUCTION. MINOR DETAILS NOT SHOWN.

1. ONE 1.50 OUTLET WITH 2.00 PIPING AND SWIVEL LOCATED IN CENTER BUMPER TRAY
2. SHORELINE RECEPTACLE WITH KUSSMALL SUPER AUTO-EJECT LOCATED ON DRIVER SIDE OF THE CAB
3. AIR INLET WITH DISCONNECT COUPLING RECESSED IN DRIVER'S CAB STEP WELL
4. BATTERY CHARGER LOCATED BEHIND DRIVER'S SEAT
5. BATTERY CHARGE INDICATOR LOCATED ON DRIVER SIDE OF CAB

CUSTOMER APPROVAL

APPROVED BY: _____
DATE: _____



NFPA 1900
(2024)
COMPLIANT

JOB NO. 45465

SCALE 1:24 DATE

DRAWN BY DLH 16JAN26

CHECKED BY -

SHEET SIZE D SHEET NO. 1 OF 1

CHASSIS DATA	TITLE	2000 GPM, 780G TANK, 750G WATER, 30G FOAM
MAKE	FOR	177" PUC PUMPER, MUX
PIERCE		PIERCE STOCK FIELD
MODEL		PIERCE MANUFACTURING INC.
DWG NO.		45465AD
ENFORCER		