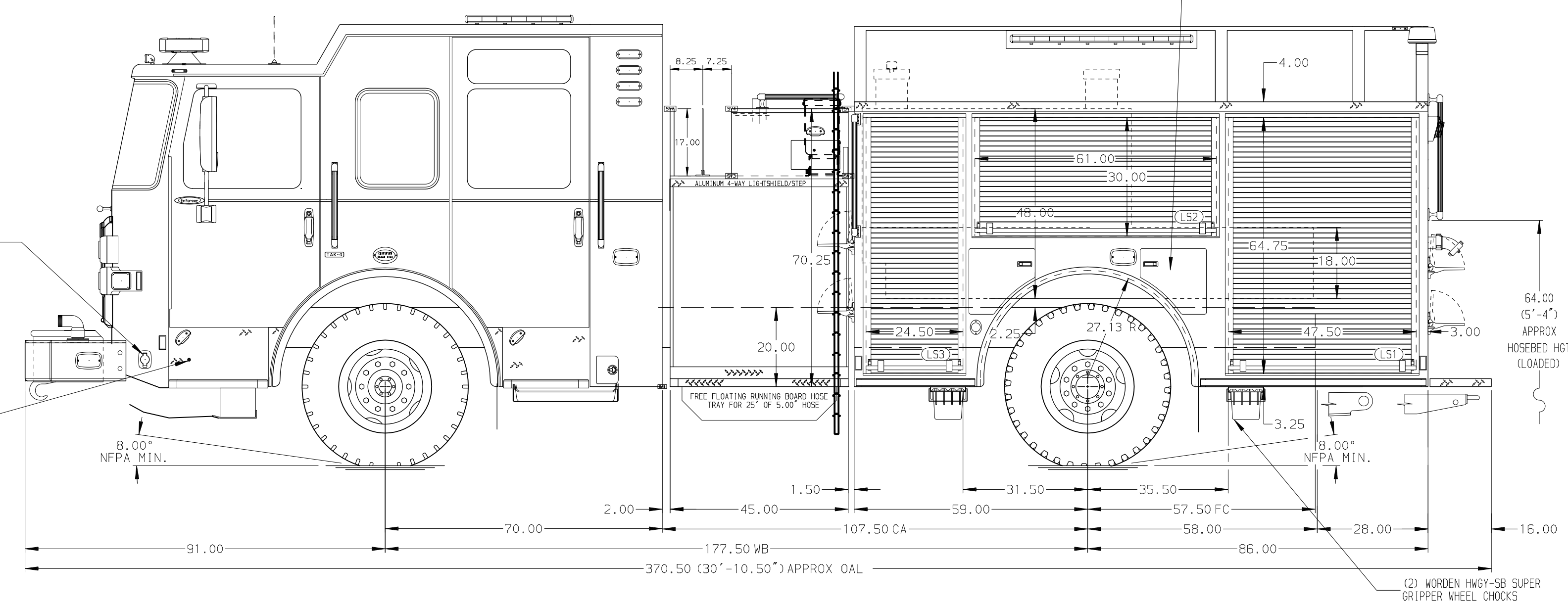
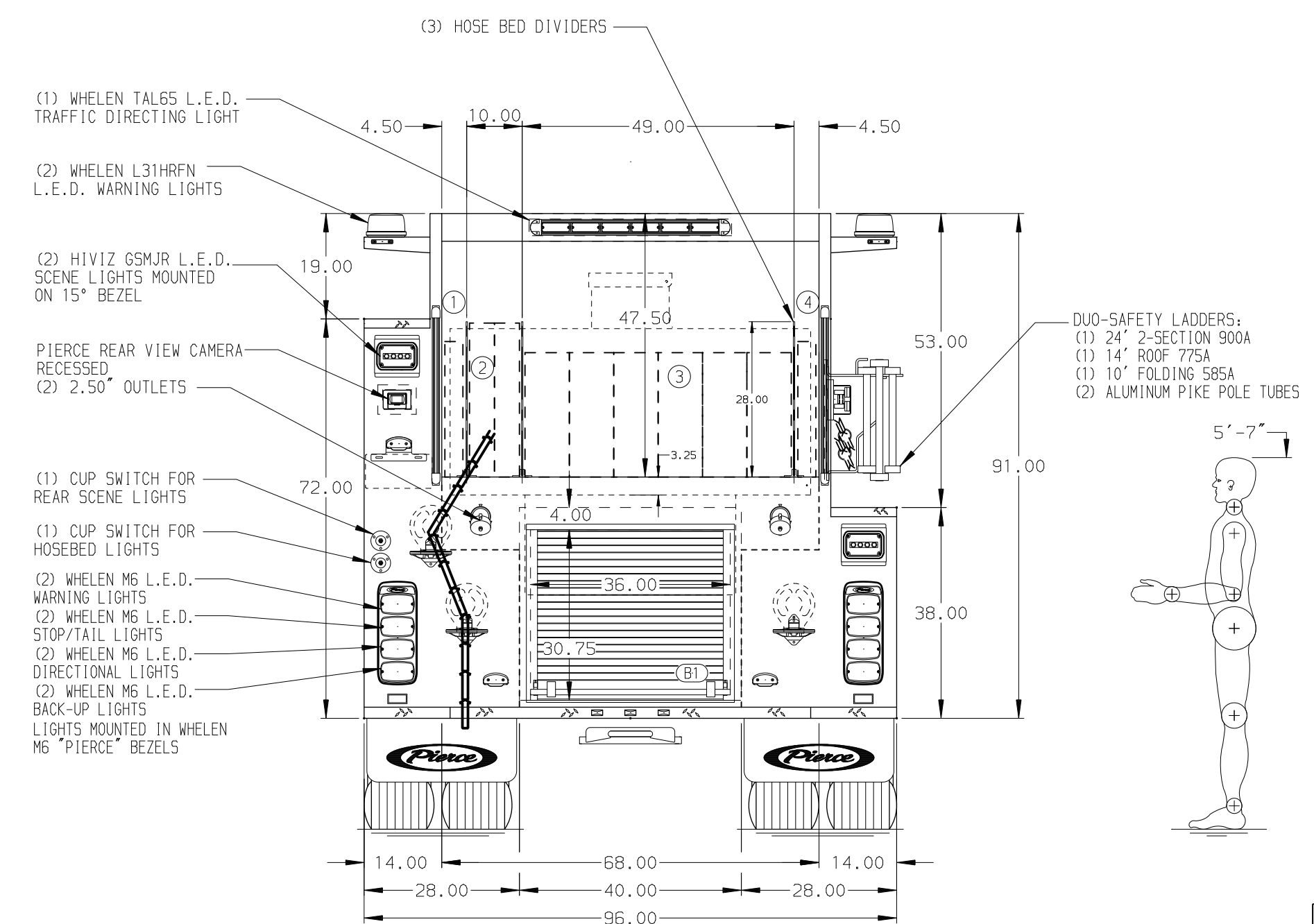
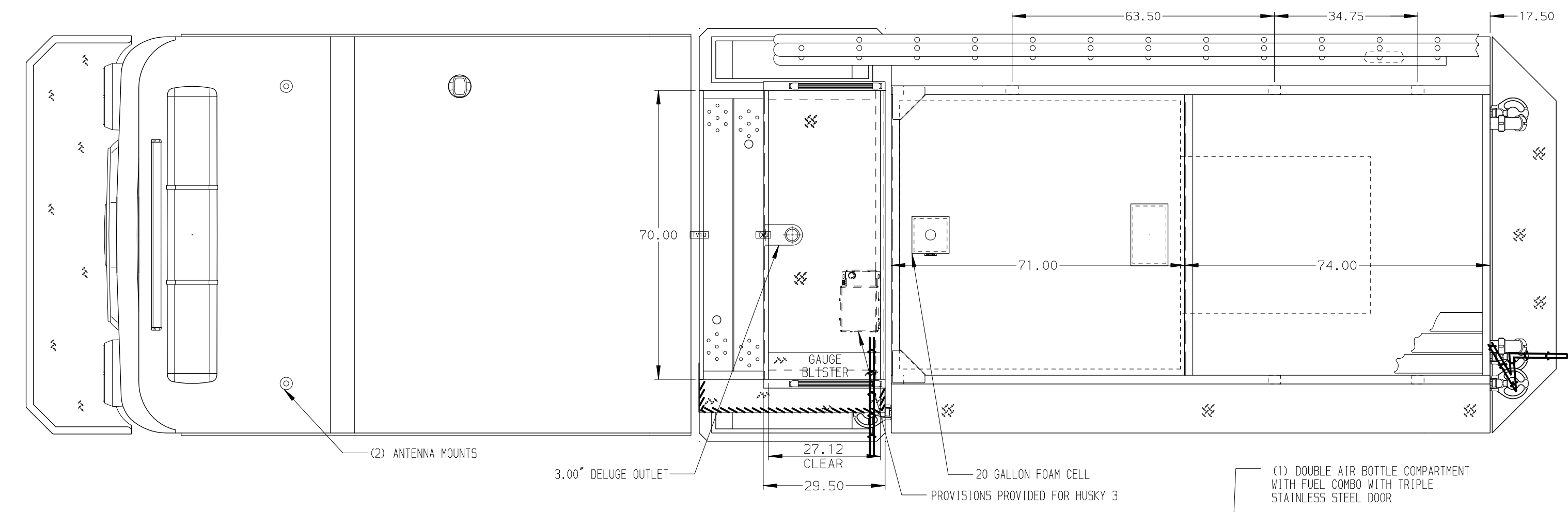


- HOSEBED CAPACITIES**
- ① - 200' OF 1.75" D.J. POLY HOSE
 - ② - 400' OF 2.50" D.J. POLY HOSE
 - ③ - 1000' OF 5.00" D.J. POLY HOSE
 - ④ - 200' OF 1.75" D.J. POLY HOSE



ALUMINUM BODY

SIDE ROLL AND FRONTAL IMPACT PROTECTION

NOTE
DIMENSIONS SHOWN ARE APPROXIMATE AND ARE SUBJECT TO MINOR DEVIATIONS AS MAY OCCUR OR BE NECESSARY IN CONSTRUCTION. MINOR DETAILS NOT SHOWN.

- 1. PACCAR DEF TANK MOUNTED UNDER CAB ON THE DRIVER'S SIDE
- 2. DUAL L.E.D. LIGHT STRIPS LOCATED IN HOSE BED
- 3. BATTERY CHARGER LOCATED BEHIND DRIVER'S SEAT
- 4. BATTERY CHARGE INDICATOR LOCATED DRIVER SIDE SEAT RISER

CUSTOMER APPROVAL			
APPROVED BY: _____			
DATE: _____			
CHASSIS DATA	TITLE	1500 GPM, 770G TANK, 750G WATER, 20G FOAM	
MAKE	FOR	PIERCE FIELD UNIT	
PIERCE	MODEL	APPLETON, WISCONSIN	
24FEB26	DLH	WME	DWG NO. 45612AD
REV	DATE	BY	CH ENFORCER



NFPA 1900 (2024) COMPLIANT

JOB NO.	45612
SCALE	DATE
1:24	
DRAWN BY	22JAN26
DLH	
CHECKED BY	23JAN26
AST	
SHEET SIZE	SHEET NO.
D	1 OF 1