

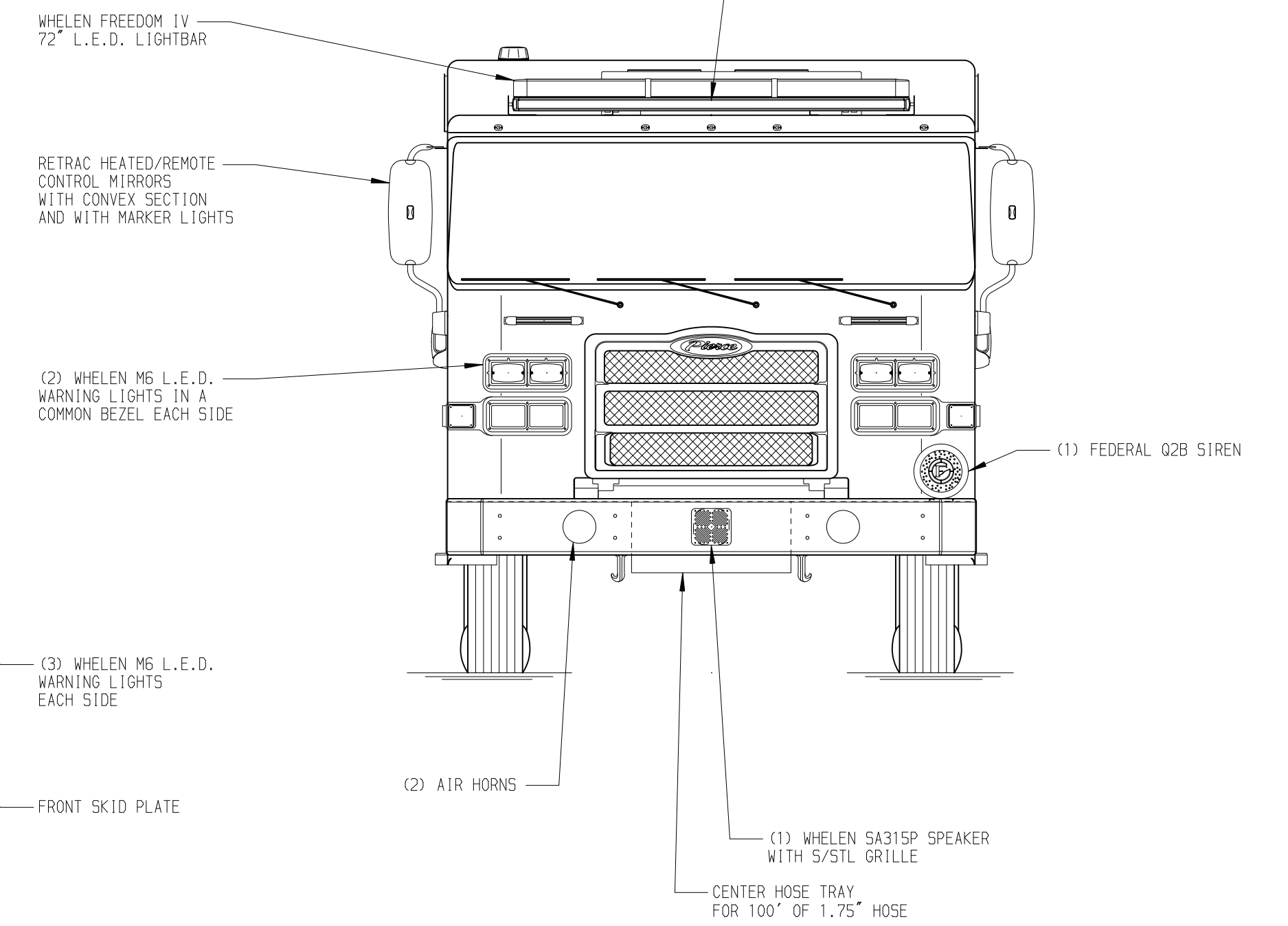
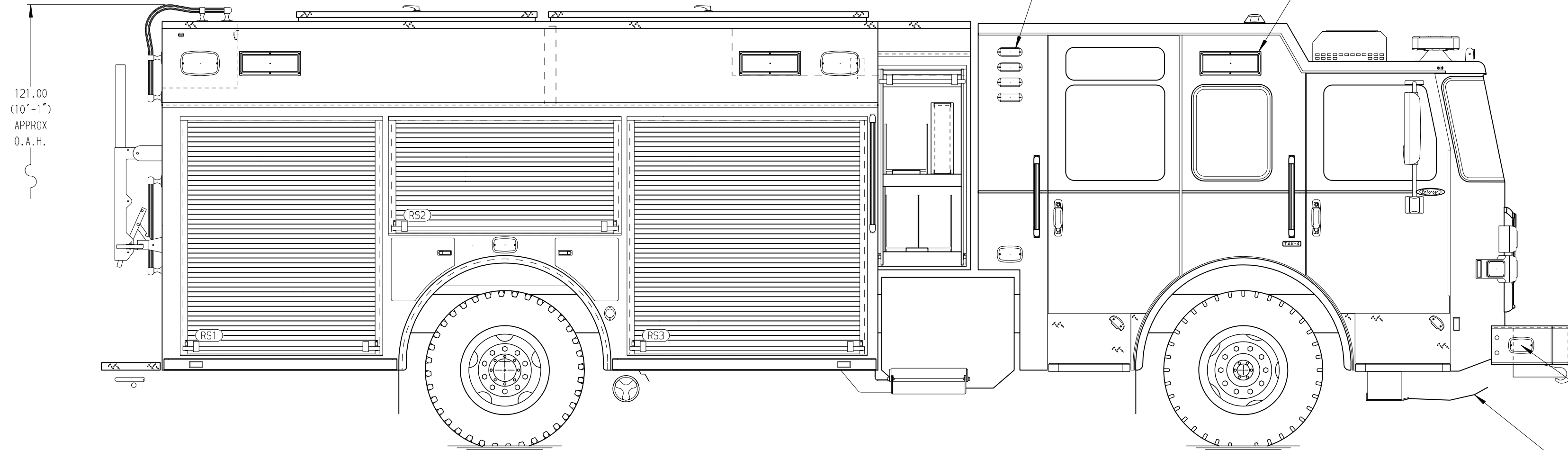
PUMPER, PUC  
 BODY  
 Pumper, PUC, Aluminum  
 CHASSIS  
 Enforcer Chassis, PUC  
 ELECTRICAL SYSTEM  
 MUX

CHASSIS  
 AXLE, FRONT, CUSTOM  
 19,500 Lb TAK-4 Axle  
 AXLE, REAR  
 27,000 Lb Meritor Axle  
 ENGINE  
 510 HP Paccar MX13 Engine  
 TRANSMISSION  
 Allison 6th Gen, 4000 EVS P  
 BUMPER  
 19" Extended Pointed Steel  
 CAB  
 7010 Enforcer Cab, PUC

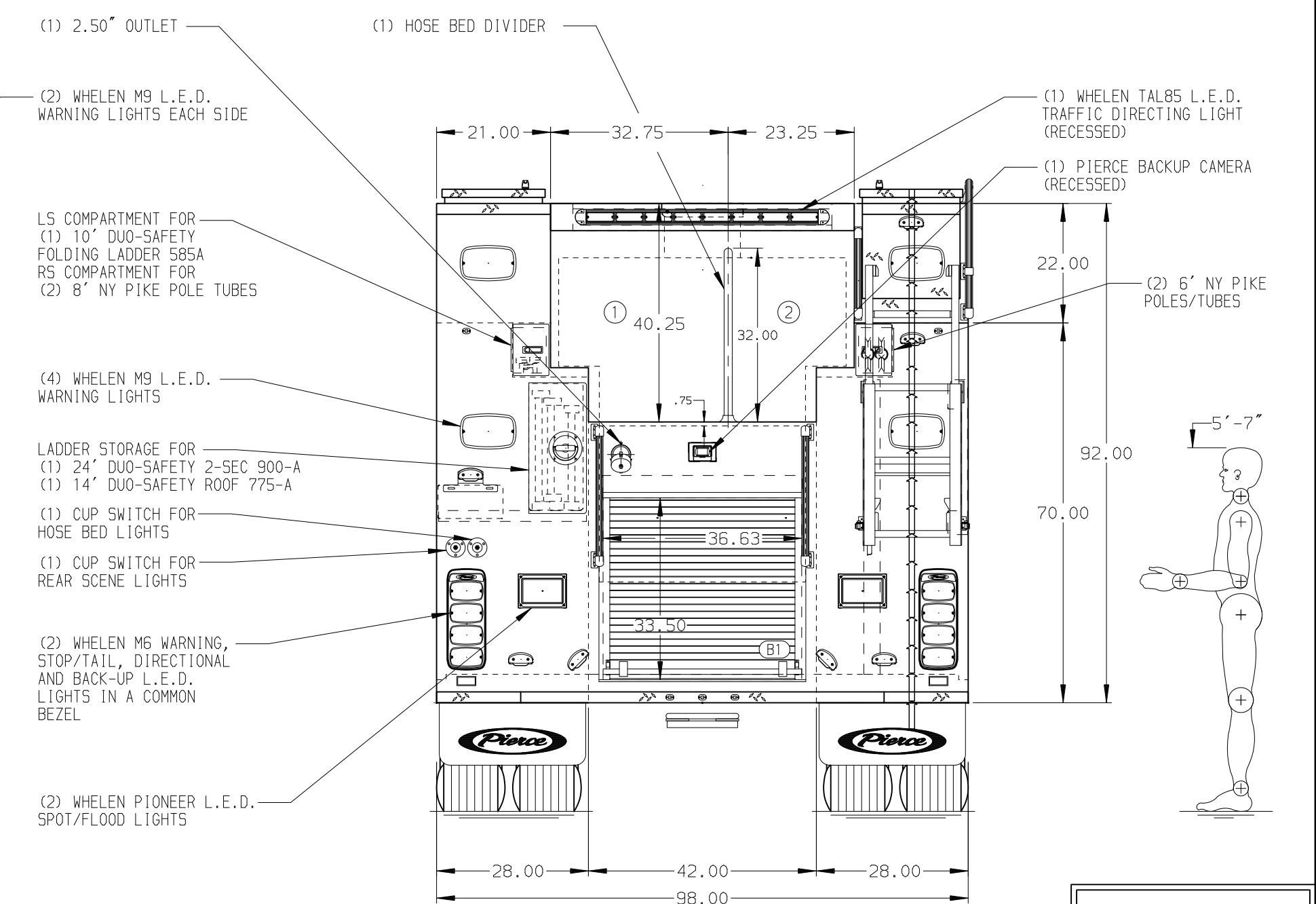
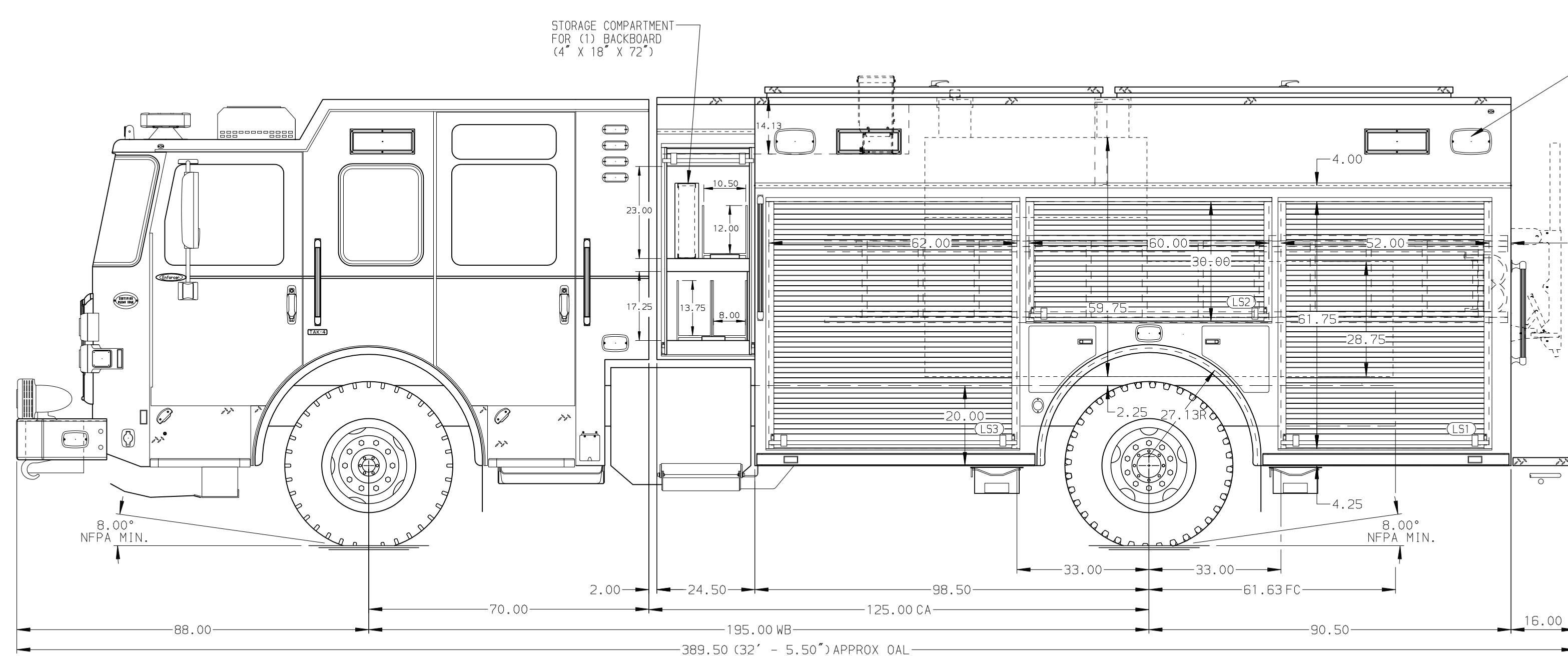
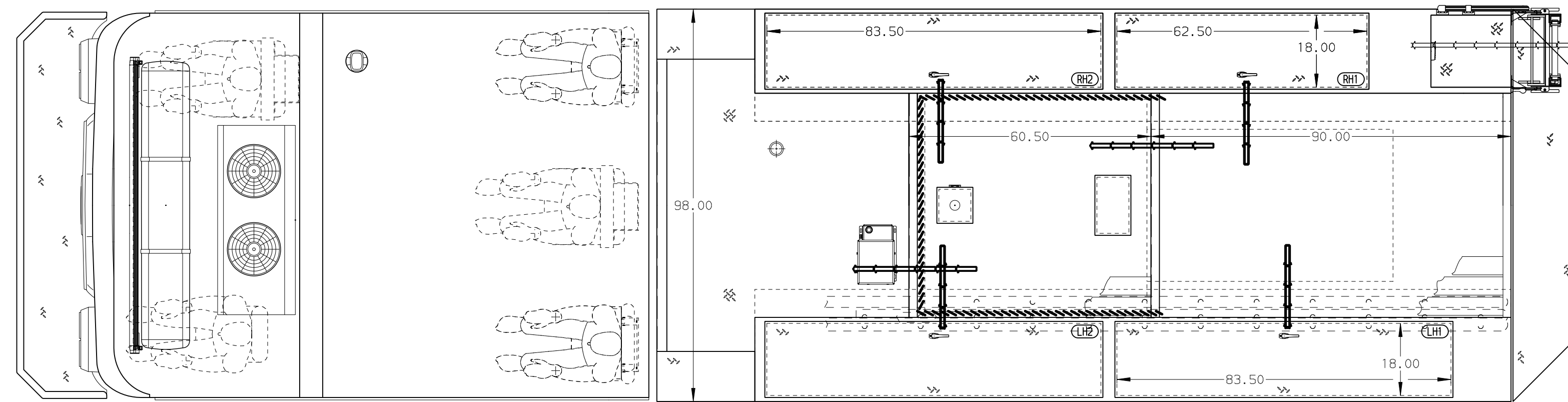
BODY  
 TOTAL TANK CAPACITY  
 750 Gallon Low Hose Bed Poly Tank  
 WATER CAPACITY  
 730 Gallons of Water  
 FOAM CELL CAPACITY  
 20 Gallon Foam Cell  
 COMPT, PUMPER, REAR  
 33.50" FF RollUp Rear Compt w/Tailboard, PUC  
 COMPT, PUMPER, LEFT SIDE  
 189" RollUp Full Height & Depth Front & Rear, PUC  
 COMPT, PUMPER, RIGHT SIDE  
 189" RollUp Full Height & Depth Front & Rear, PUC

FIRE SUPPRESSION  
 PUMPHOUSE  
 Control Zone, PUC  
 PUMP  
 2000 GPM Pierce PUC  
 CROSSLAYS, 1.50"  
 (2) 1.50", Poly Trays, 200'  
 CROSSLAYS, 2.50"  
 (1) 2.50", Poly Tray, 200'  
 SPEEDLAYS  
 GENERATOR  
 Generator Not Required  
 FOAM SYSTEM  
 Husky 3 Single Agent Foam System

121.00  
 (10'-1")  
 APPROX  
 O.A.H.



HOSEBED CAPACITIES  
 ① 1000' OF 5.00" D.J. HOSE  
 ② 600' OF 2.50" D.J. HOSE



NOTE  
 DIMENSIONS SHOWN ARE APPROXIMATE AND ARE SUBJECT TO MINOR DEVIATIONS AS MAY OCCUR OR BE NECESSARY IN CONSTRUCTION.  
 MINOR DETAILS NOT SHOWN.

- 1. ONE 1.50 OUTLET WITH 2.00 PIPING AND SWIVEL LOCATED IN CENTER BUMPER TRAY
- 2. SHORELINE RECEPTACLE WITH KUSSMAUL SUPER AUTO-EJECT LOCATED ON DRIVER SIDE FRONT CAB CORNER
- 3. AIR INLET WITH DISCONNECT COUPLING IN THE DRIVER SIDE STEPWELL
- 4. BATTERY CHARGER LOCATED PER ORDER
- 5. BATTERY CHARGE INDICATOR LOCATED ON DRIVER SEAT RISER
- 6. ADJUSTABLE SHELVES LOCATED PER ORDER
- 7. FLOOR MOUNTED SLIDE-OUT TRAYS LOCATED PER ORDER
- 8. SWING-OUT TOOLBOARDS LOCATED PER ORDER
- 9. PARTITION BETWEEN LS1/B1 AND RS1/B1

CUSTOMER APPROVAL

APPROVED BY: \_\_\_\_\_  
 DATE: \_\_\_\_\_

**Pierce** MANUFACTURING INC.

CHASSIS DATA	TITLE	Pierce Puc Pumper Approval Drawing	JOB NO.	45776
MAKE	FOR	Dealer Allocated Stock Unit 1	SCALE	DATE
PIERCE		Bid 3066	DRAWN BY	DLH
MODEL	DWG NO.	45776AD	CHECKED BY	-
ENFORCER			SHEET SIZE	D
			SHEET NO.	1 OF 1

NFPA 1900  
 (2024)  
 COMPLIANT